



# 2022 PIERCE COUNTY LEGISLATURE

LEGISLATIVE HOTLINE - 1-800-562-6000 - [support@leg.wa.gov](mailto:support@leg.wa.gov)

Regular Session starts 1/10/2022

Bldg. Key Code: JLOB - John L. O'Brien Bldg. LEG - Legislative Bldg. INB - Irv Newhouse Bldg. JAC - John A. Cherberg Bldg.



Sen. Jim McCune (R)  
PO Box 40402  
Olympia, WA 98504  
Office: INB 105  
360-786-7602  
[jim.mccune@leg.wa.gov](mailto:jim.mccune@leg.wa.gov)



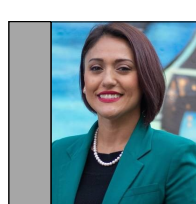
Rep. Michelle Caldier (R)  
PO Box 40600  
Olympia, WA 98504  
Office: LEG 122-H  
360-786-7802  
[michelle.caldier@leg.wa.gov](mailto:michelle.caldier@leg.wa.gov)



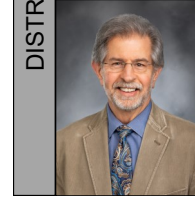
Rep. Melanie Morgan (D)  
PO Box 40600  
Olympia, WA 98504  
Office: JLOB 417  
360-786-7906  
[melanie.morgan@leg.wa.gov](mailto:melanie.morgan@leg.wa.gov)



Rep. Andrew Barkis (R)  
PO Box 40600  
Olympia, WA 98504  
Office: LEG 122-D  
360-584-9846  
[andrew.barkis@leg.wa.gov](mailto:andrew.barkis@leg.wa.gov)



Sen. Yasmin Trudeau (D)  
PO Box 40427  
Olympia, WA 98504  
Office: \*  
360-786-7652  
[yasmin.trudeau@leg.wa.gov](mailto:yasmin.trudeau@leg.wa.gov)



Rep. Steve Kirby (D)  
PO Box 40600  
Olympia, WA 98504  
Office: LEG 437-B  
360-786-7996  
[steve.kirby@leg.wa.gov](mailto:steve.kirby@leg.wa.gov)



Rep. J.T. Wilcox (R)  
PO Box 40600  
Olympia, WA 98504  
Office: LEG 335-C  
253-329-5194  
[j.t.wilcox@leg.wa.gov](mailto:j.t.wilcox@leg.wa.gov)



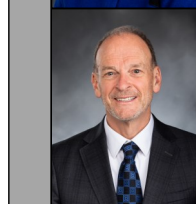
Rep. Laurie Jinkins (D)  
PO Box 40600  
Olympia, WA 98504  
Office: LEG 339-C  
253-393-2990  
[laurie.jinkins@leg.wa.gov](mailto:laurie.jinkins@leg.wa.gov)



Sen. Claire Wilson (D)  
PO Box 40430  
Olympia, WA 98504  
Office: LEG 407  
360-786-7658  
[claire.wilson@leg.wa.gov](mailto:claire.wilson@leg.wa.gov)



Sen. Chris Gildon (R)  
PO Box 40425  
Olympia, WA 98504  
Office: INB 110  
360-786-7648  
[chris.gildon@leg.wa.gov](mailto:chris.gildon@leg.wa.gov)



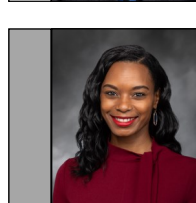
Rep. Jake Fey (D)  
PO Box 40600  
Olympia, WA 98504  
Office: JLOB 415  
253-650-0916  
[jake.fey@leg.wa.gov](mailto:jake.fey@leg.wa.gov)



Rep. Jamila Taylor (D)  
PO Box 40600  
Olympia, WA 98504  
Office: JLOB 418  
360-868-6290  
[jamila.taylor@leg.wa.gov](mailto:jamila.taylor@leg.wa.gov)



Rep. Kelly Chambers (R)  
PO Box 40600  
Olympia, WA 98504  
Office: JLOB 426  
360-746-3670  
[kelly.chambers@leg.wa.gov](mailto:kelly.chambers@leg.wa.gov)



Sen. Twina Nobles (D)  
PO Box 40428  
Olympia, WA 98504  
Office: JAC 226  
360-786-7654  
[twina.nobles@leg.wa.gov](mailto:twina.nobles@leg.wa.gov)



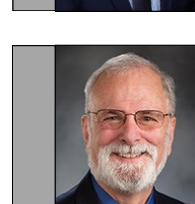
Rep. Jesse Johnson (D)  
PO Box 40600  
Olympia, WA 98504  
Office: JLOB 369  
206-333-2989  
[jesse.johnson@leg.wa.gov](mailto:jesse.johnson@leg.wa.gov)



Rep. Cyndy Jacobsen (R)  
PO Box 40600  
Olympia, WA 98504  
Office: JLOB 405  
253-449-8545  
[cyndy.jacobsen@leg.wa.gov](mailto:cyndy.jacobsen@leg.wa.gov)



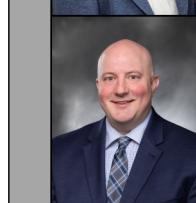
Rep. Mari Leavitt (D)  
PO Box 40600  
Olympia, WA 98504  
Office: JLOB 330  
253-256-0302  
[mari.leavitt@leg.wa.gov](mailto:mari.leavitt@leg.wa.gov)



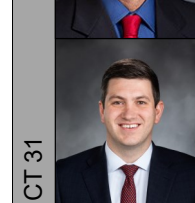
Sen. Phil Fortunato (R)  
PO Box 40431  
Olympia, WA 98504  
Office: LEG 403  
360-786-7660  
[phil.fortunato@leg.wa.gov](mailto:phil.fortunato@leg.wa.gov)



Sen. Emily Randall (D)  
PO Box 40426  
Olympia, WA 98504  
Office: LEG 416  
360-786-7650  
[emily.randall@leg.wa.gov](mailto:emily.randall@leg.wa.gov)



Rep. Dan Bronoske (D)  
PO Box 40600  
Olympia, WA 98504  
Office: JLOB 419  
360-786-7958  
[dan.bronoske@leg.wa.gov](mailto:dan.bronoske@leg.wa.gov)



Rep. Drew Stokesbary (R)  
PO Box 40600  
Olympia, WA 98504  
Office: JLOB 434  
360-786-7846  
[drew.stokesbary@leg.wa.gov](mailto:drew.stokesbary@leg.wa.gov)



Rep. Jesse Young (R)  
PO Box 40600  
Olympia, WA 98504  
Office: JLOB 468  
360-786-7964  
[jesse.young@leg.wa.gov](mailto:jesse.young@leg.wa.gov)



Sen. Steve Conway (D)  
PO Box 40429  
Olympia, WA 98504  
Office: JAC 241  
360-786-7656  
[steve.conway@leg.wa.gov](mailto:steve.conway@leg.wa.gov)



Rep. Eric Robertson (R)  
PO Box 40600  
Olympia, WA 98504  
Office: JLOB 465  
360-786-7866  
[eric.robertson@leg.wa.gov](mailto:eric.robertson@leg.wa.gov)

\*newly appointed ; office locations subject to change 11/9/2021